

SW 1/4 OF SEC 5, SOUTH 1/2 SEC 6, NORTH 1/2 SEC 7 & NORTHWEST 1/4 SEC 8, T.7N., R.2E., S.L.B. & M. 143

SUMMIT EDEN PHASE 1A, AMENDMENT 3

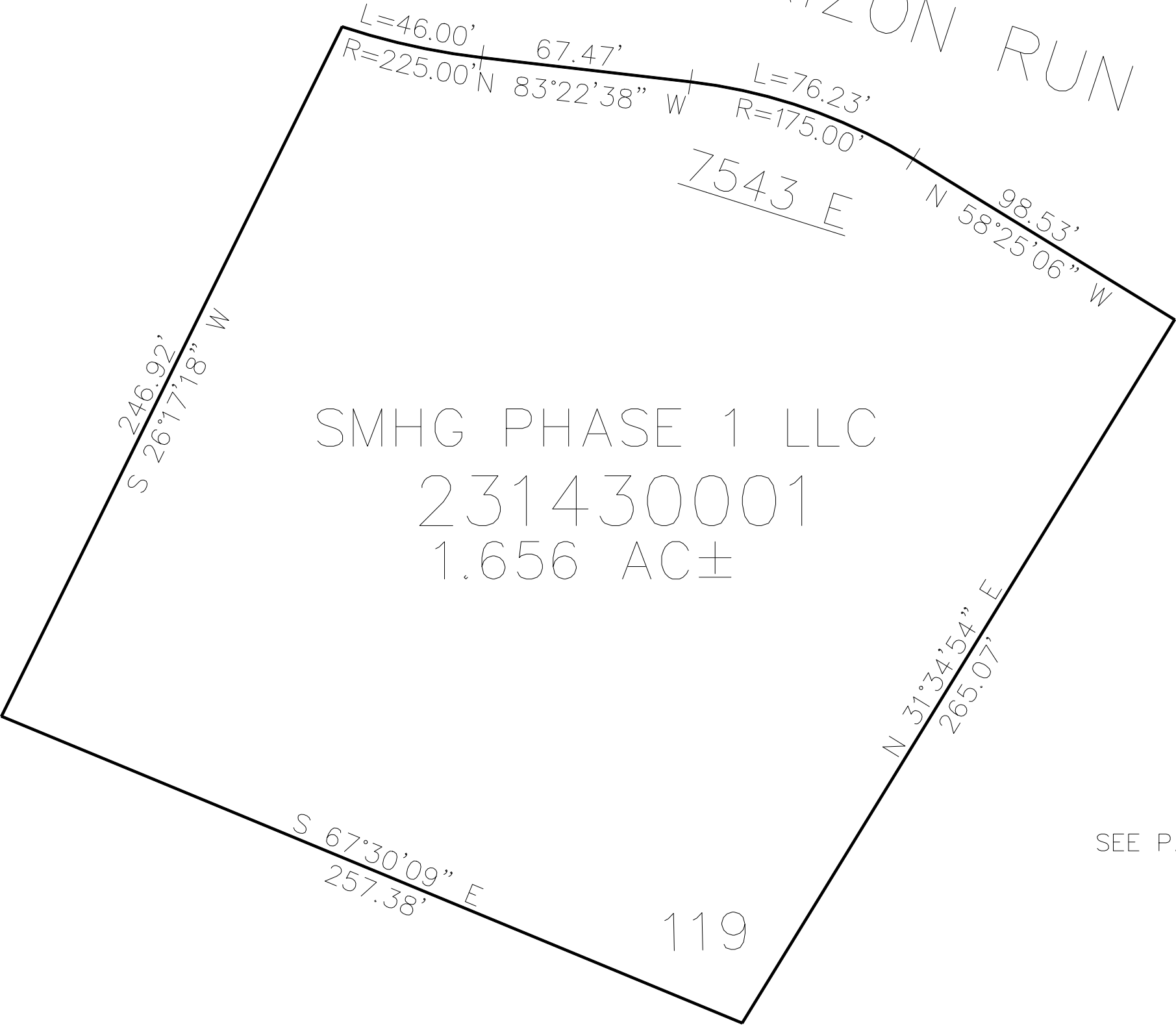
TAXING UNIT: 546

IN WEBER COUNTY  
SCALE 1" = 40'

SEE PAGE 128

SEE PAGE 128

HORIZON RUN



SEE PAGE 12

SEE PAGE 12

10' UTILITY & DRAINAGE EASEMENTS EACH  
SIDE OF PROPERTY LINES AS INDICATED  
BY DASHED LINES EXCEPT AS OTHERWISE  
SHOWN.

FOR COMPLETE ENG DATA SEE  
ORIGINAL DEDICATION PLAT IN  
BOOK 79, PAGE 75 & 76 OF RECORDS.